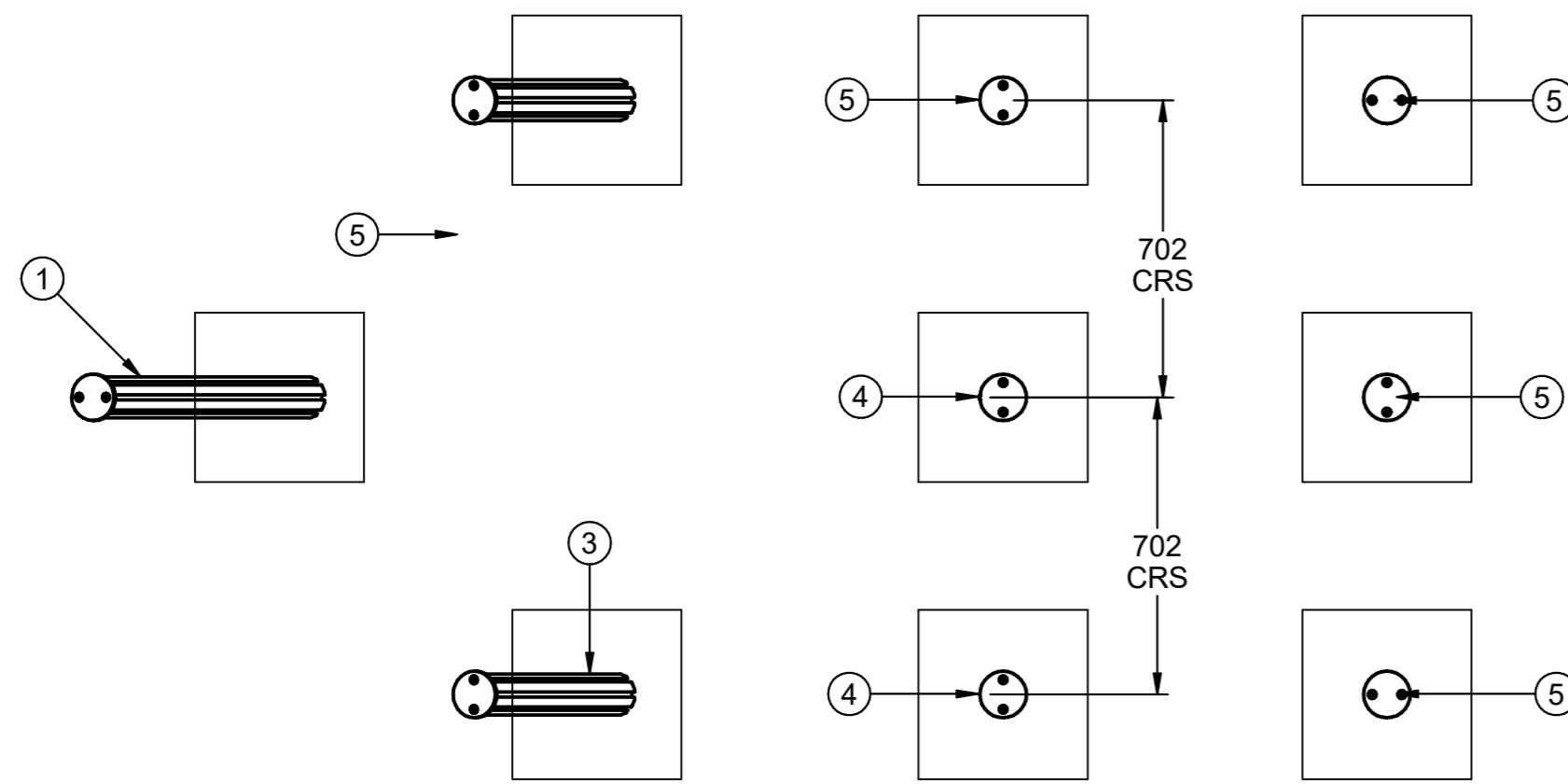


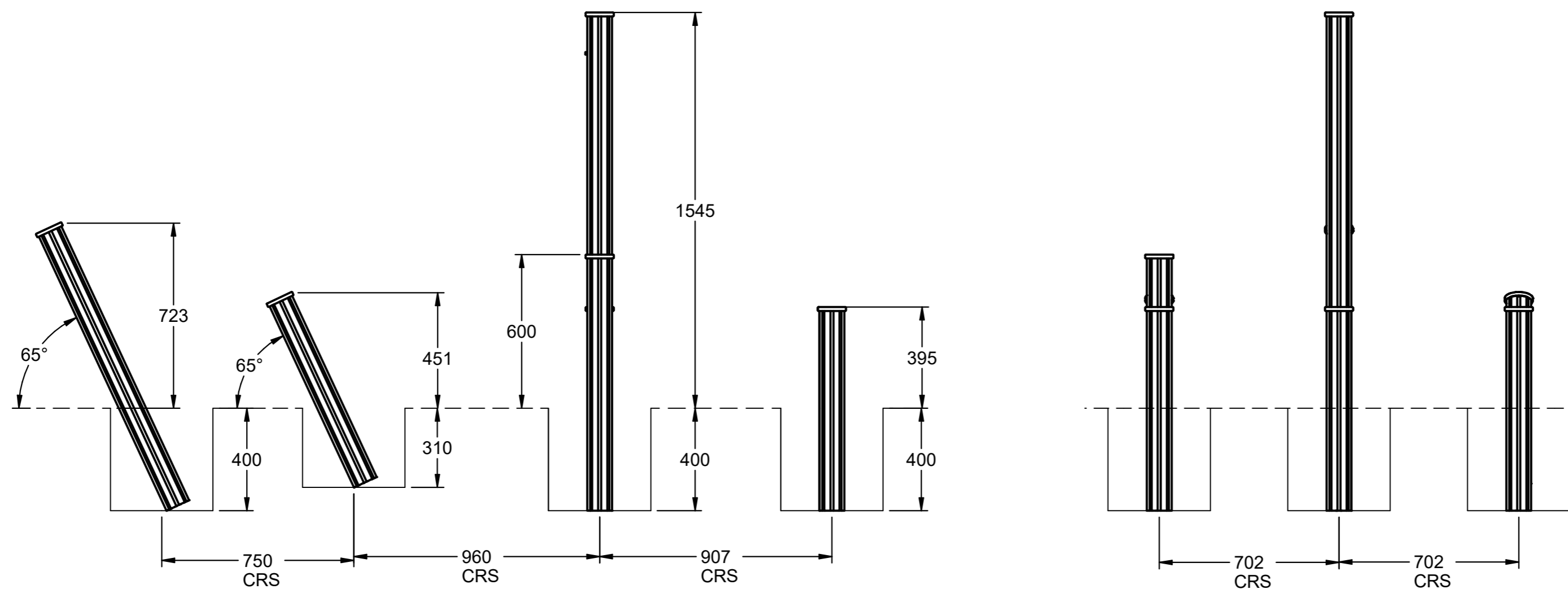
Ahoy Inclusive Pirate Ship - Installation Instructions

1.



i i) Excavate the footings for the various posts using the foundation dimensions shown above.

! DO NOT CONCRETE IN POSITION UNTIL ASSEMBLY COMPLETE

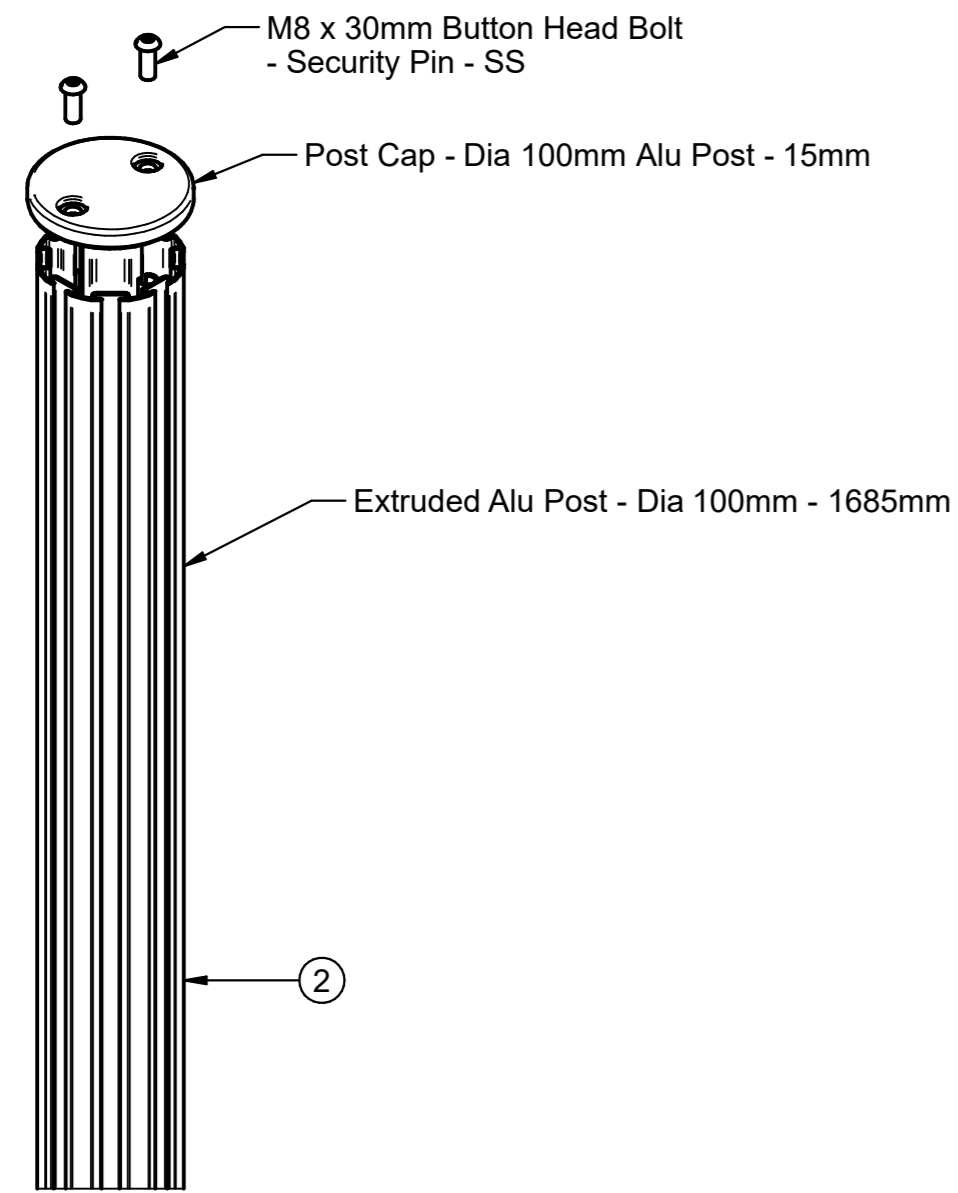


Parts List

Item	Code	Description	Qty	Item	Code	Description	Qty
1	1185mm Post with Cap	Extruded Alu Post - Dia 100mm - 1185mm	1	9	FPS3938-B	Accessible Pirate Ship - Bow Panel - 2	1
2	1685mm Post with Cap	Extruded Alu Post - Dia 100mm - 1935mm	1	10	FSU0027-A	M8 x 20mm Button Head Bolt - Security Pin - SS	2
3	785mm Post with Cap	Extruded Alu Post - Dia 100mm - 785mm	6	11	FSU1031-A	M8 Tee Nut - JNB042-SS - Incl. Loctite	2
4	985mm Post with Cap	Extruded Alu Post - Dia 100mm - 985mm	1	12	Long Stern Bench	Pre-assembled Long Stern with Bench	1
5	FIALBRKT	Alu Slot Bracket with Fixings for 15 and 19mm Panels	32	13	Pirate Flag	Pre-assembled Pirate Flag	1
6	FPS3932-B	Inclusive Pirate Ship - Stern Panel - 1	1	14	Steering Wheel	Pre-assembled Steering Wheel Panel	1
7	FPS3935-B	Inclusive Pirate Ship - Stern Panel - 1	1	15	Stern Bench 1	Pre-assembled Stern with Bench - 1	1
8	FPS3937-B	Inclusive Pirate Ship - Bow Panel - 1	1	16	Stern Bench 2	Pre-assembled Stern with Bench - 2	2

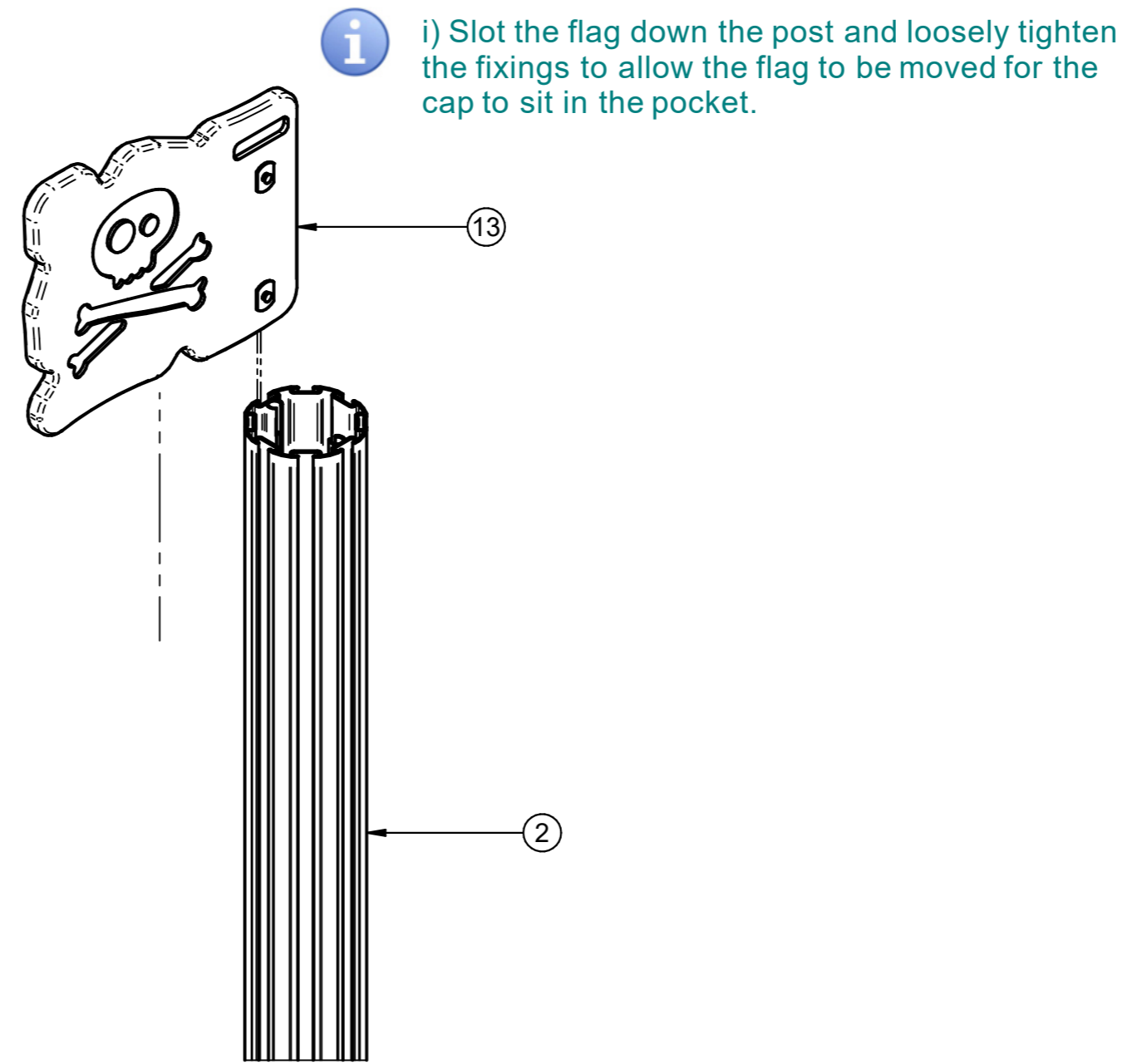


2.



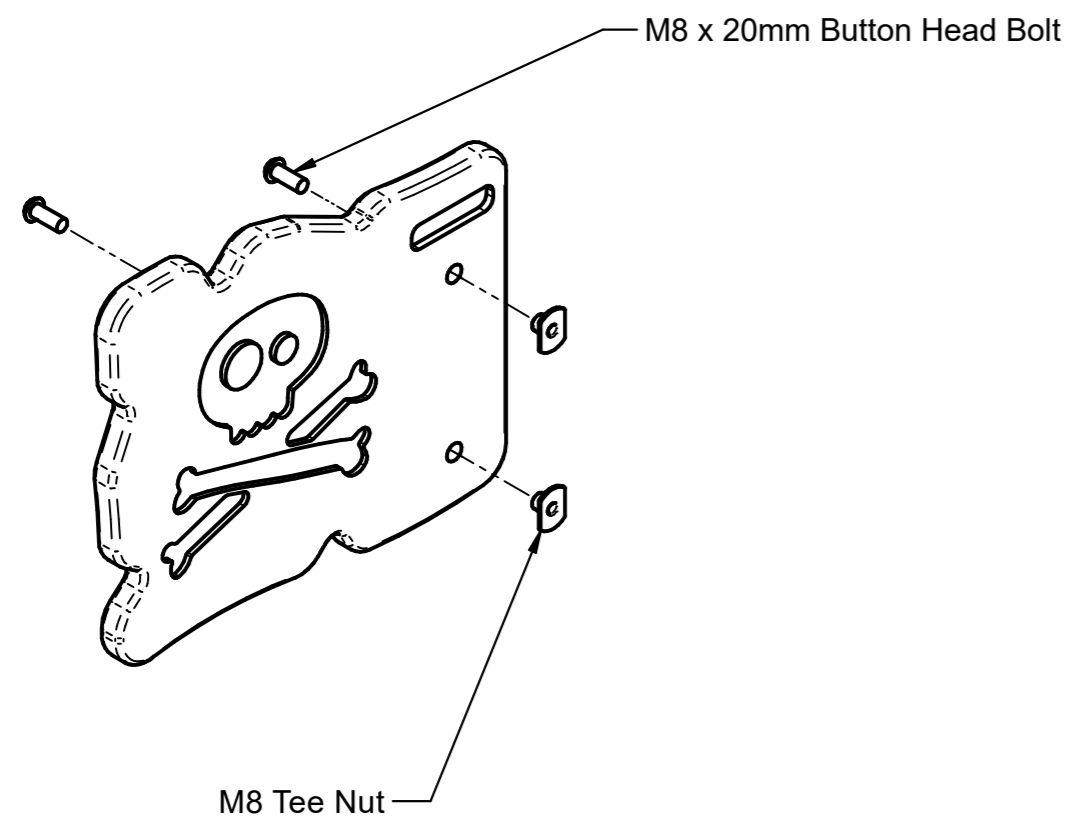
i i) Remove the loosely secured cap from the pre-assembled post.

4.



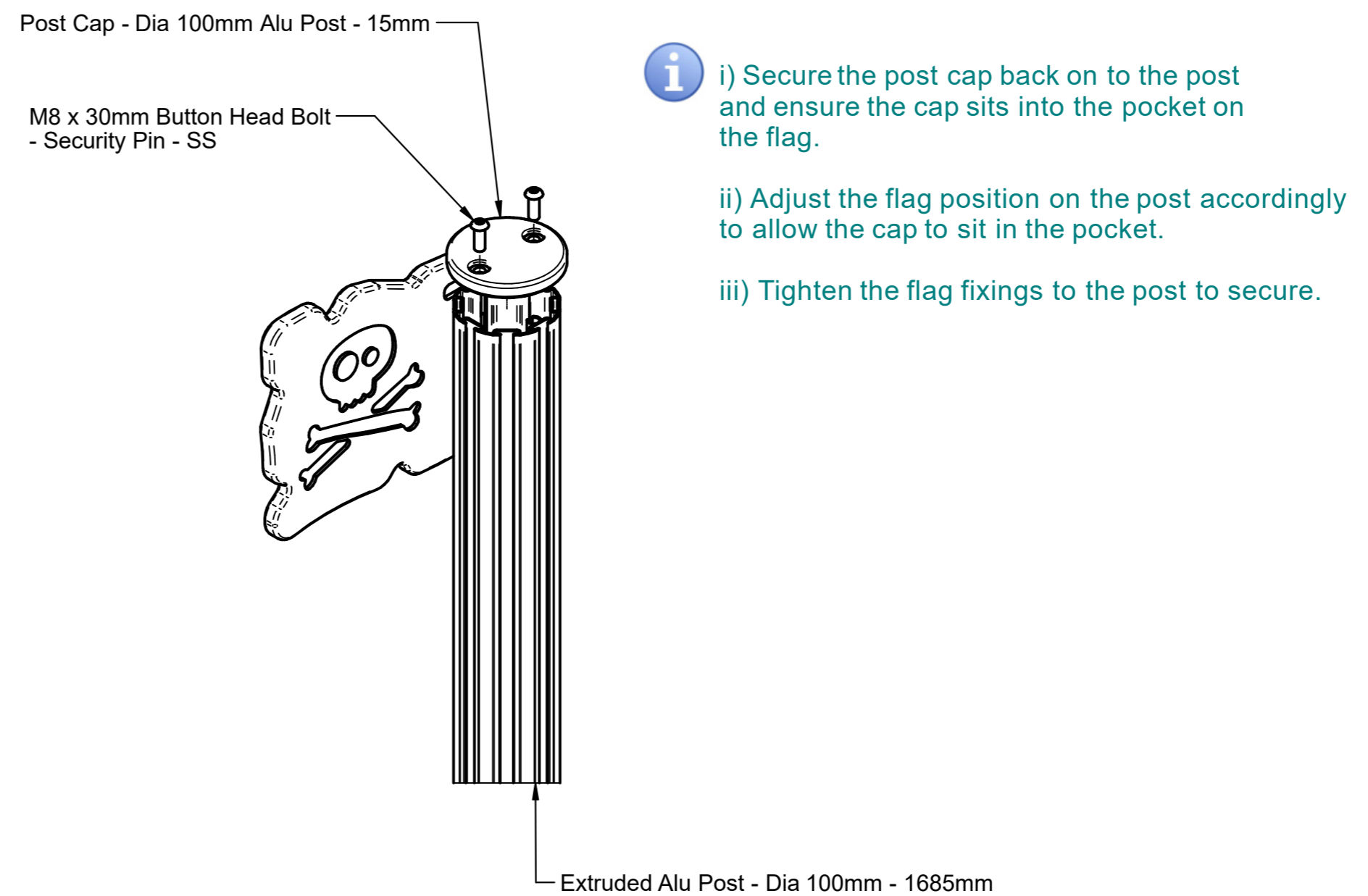
i i) Slot the flag down the post and loosely tighten the fixings to allow the flag to be moved for the cap to sit in the pocket.

3.



i i) Loosely apply the fixings on the pirate flag to allow the tee nuts to be slotted into the post.

5.

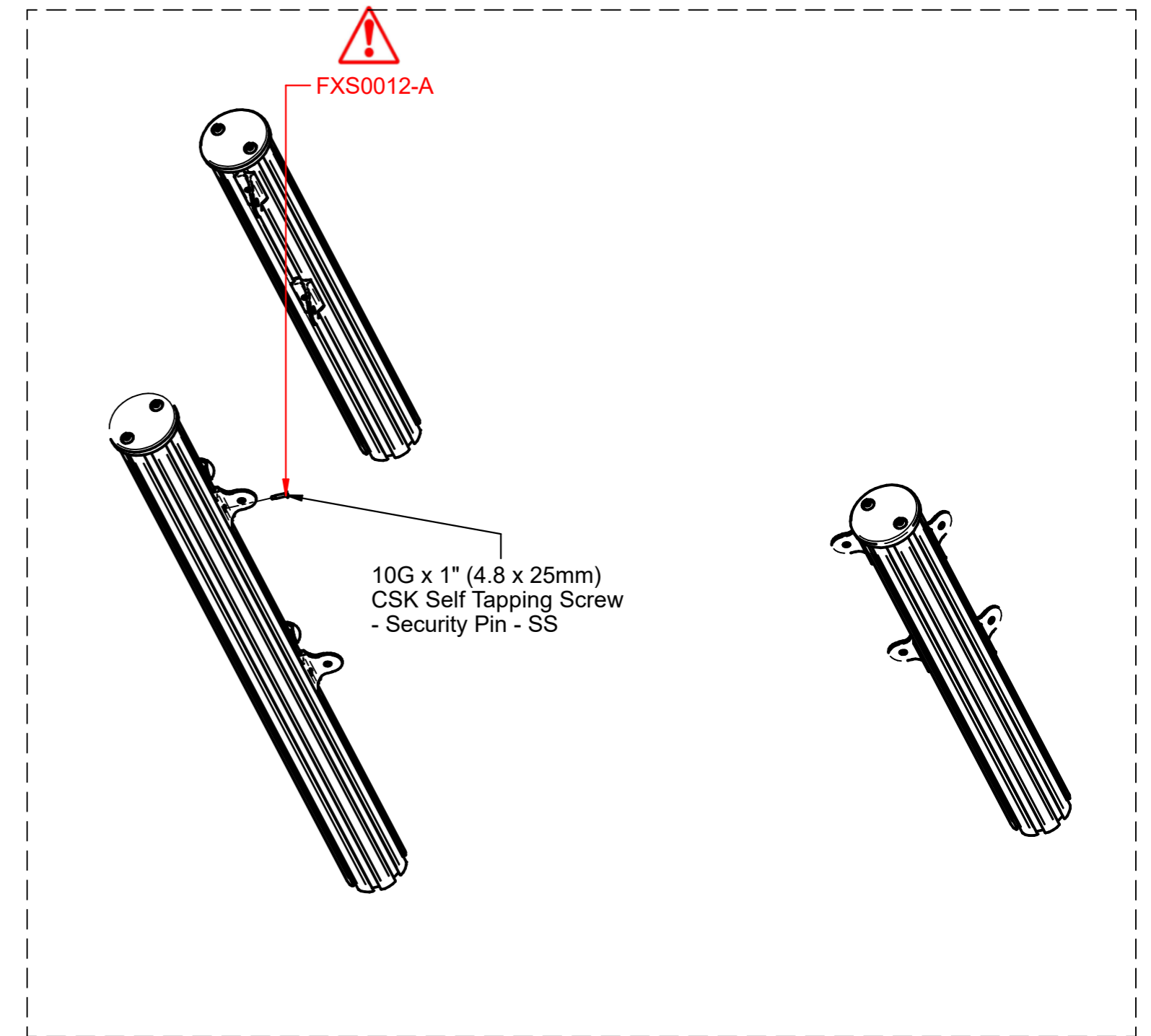
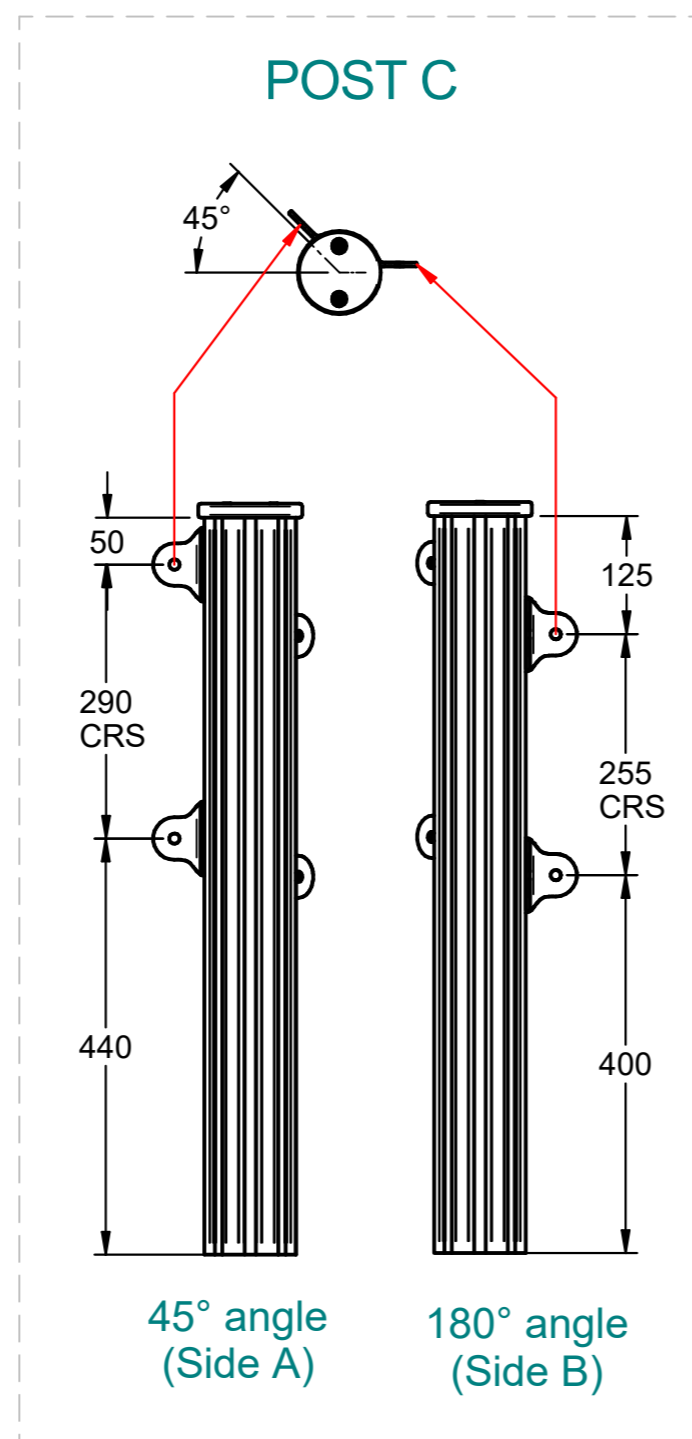
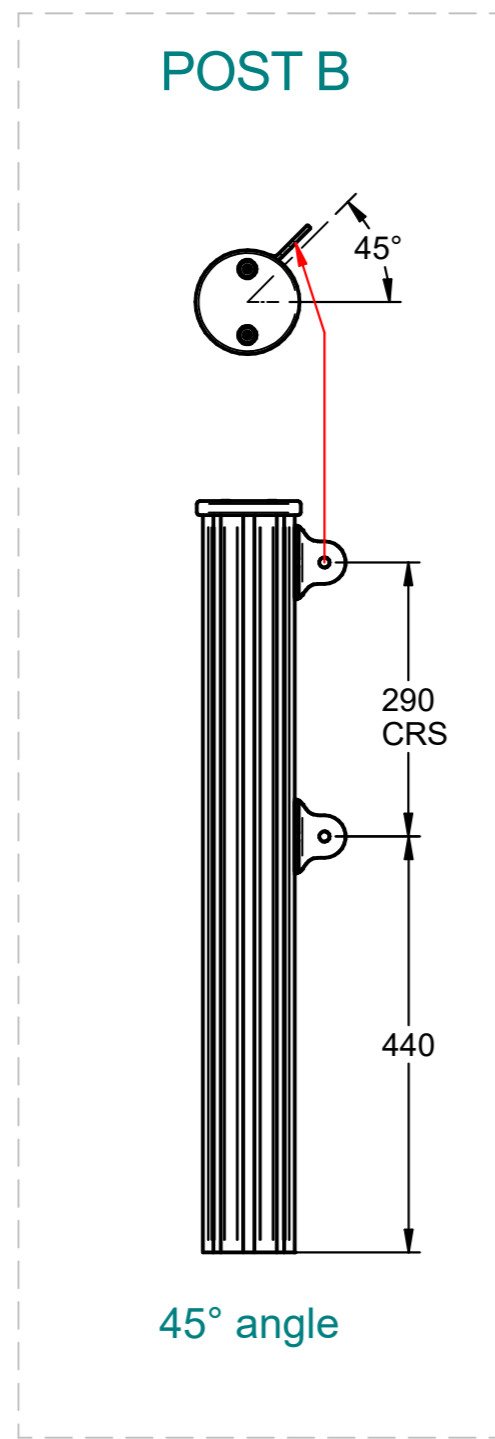
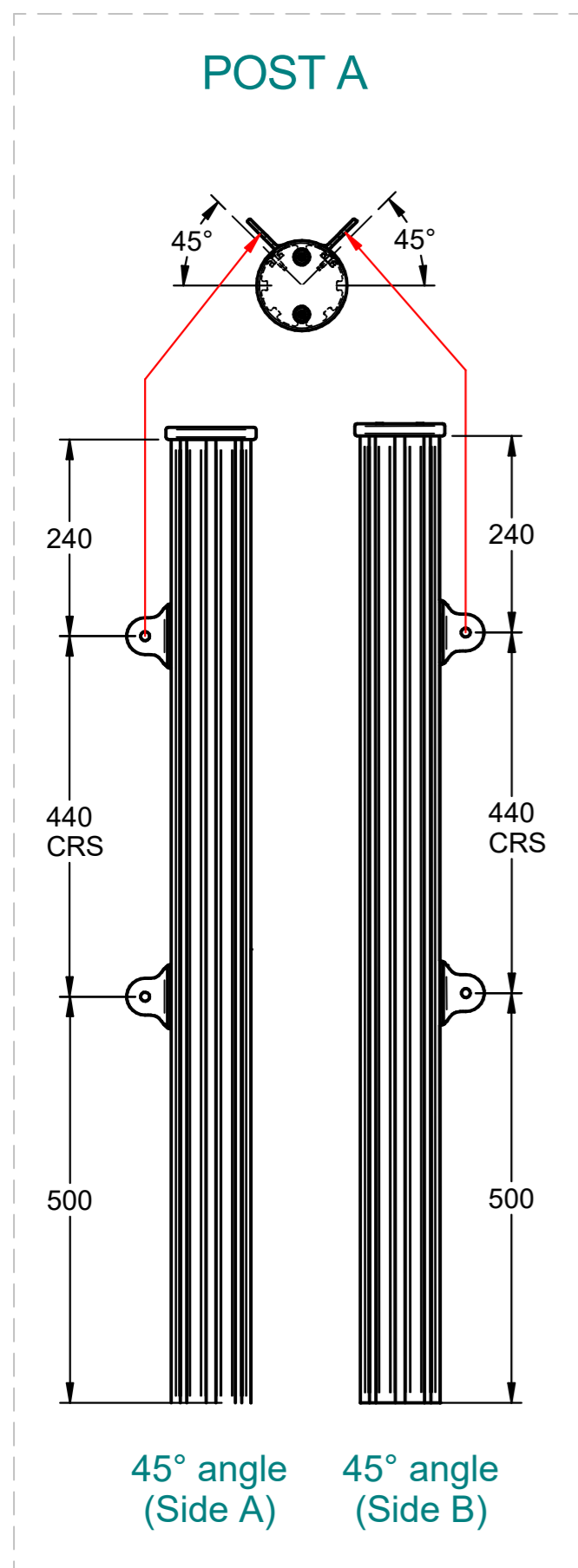
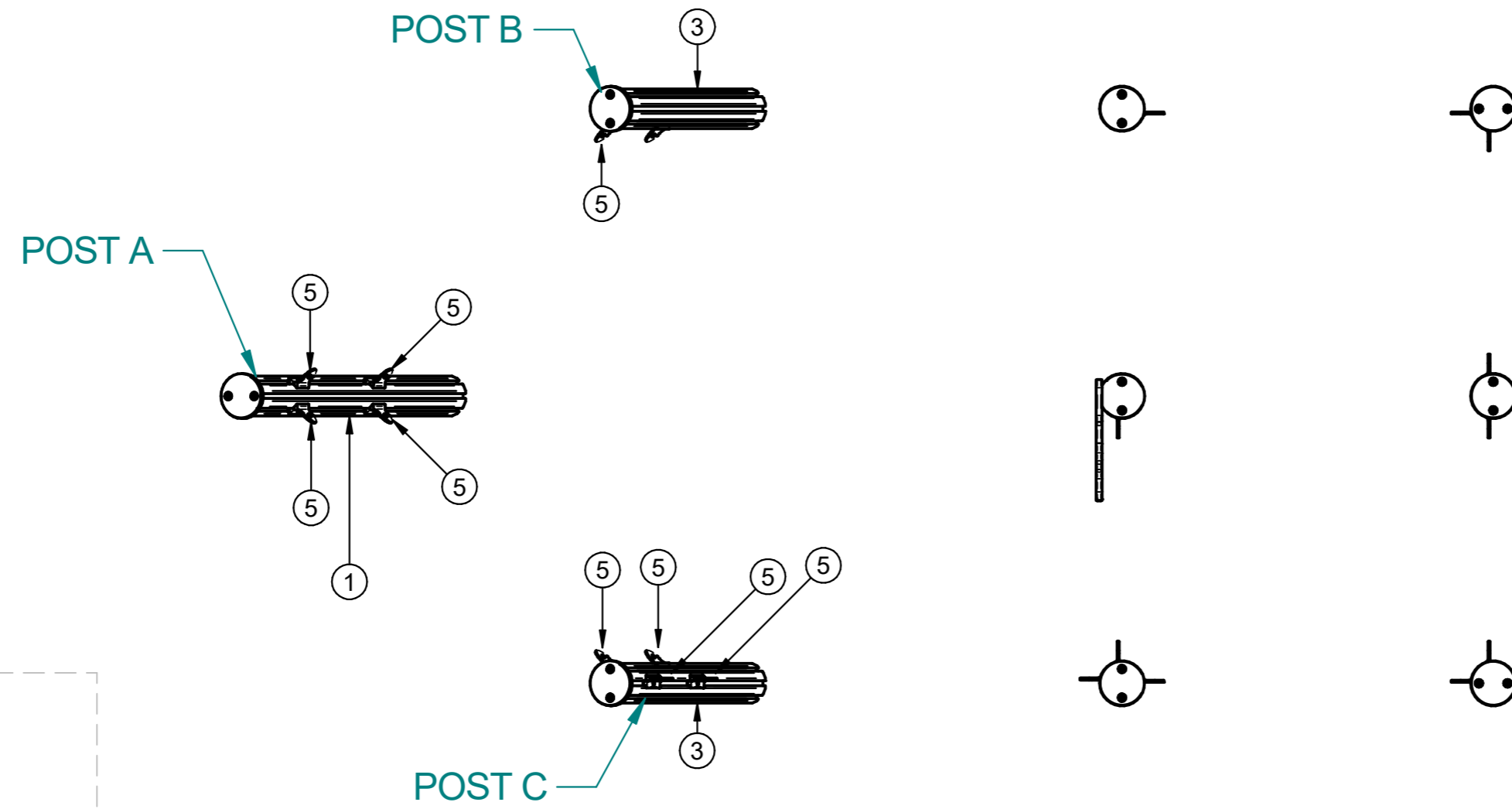


i i) Secure the post cap back on to the post and ensure the cap sits into the pocket on the flag.

ii) Adjust the flag position on the post accordingly to allow the cap to sit in the pocket.

iii) Tighten the flag fixings to the post to secure.

2.



i Starting with the front of the boat, slide the brackets onto the bottom of the posts and secure in place using the dimensional views shown left and the fixings shown above (fixings supplied with brackets)

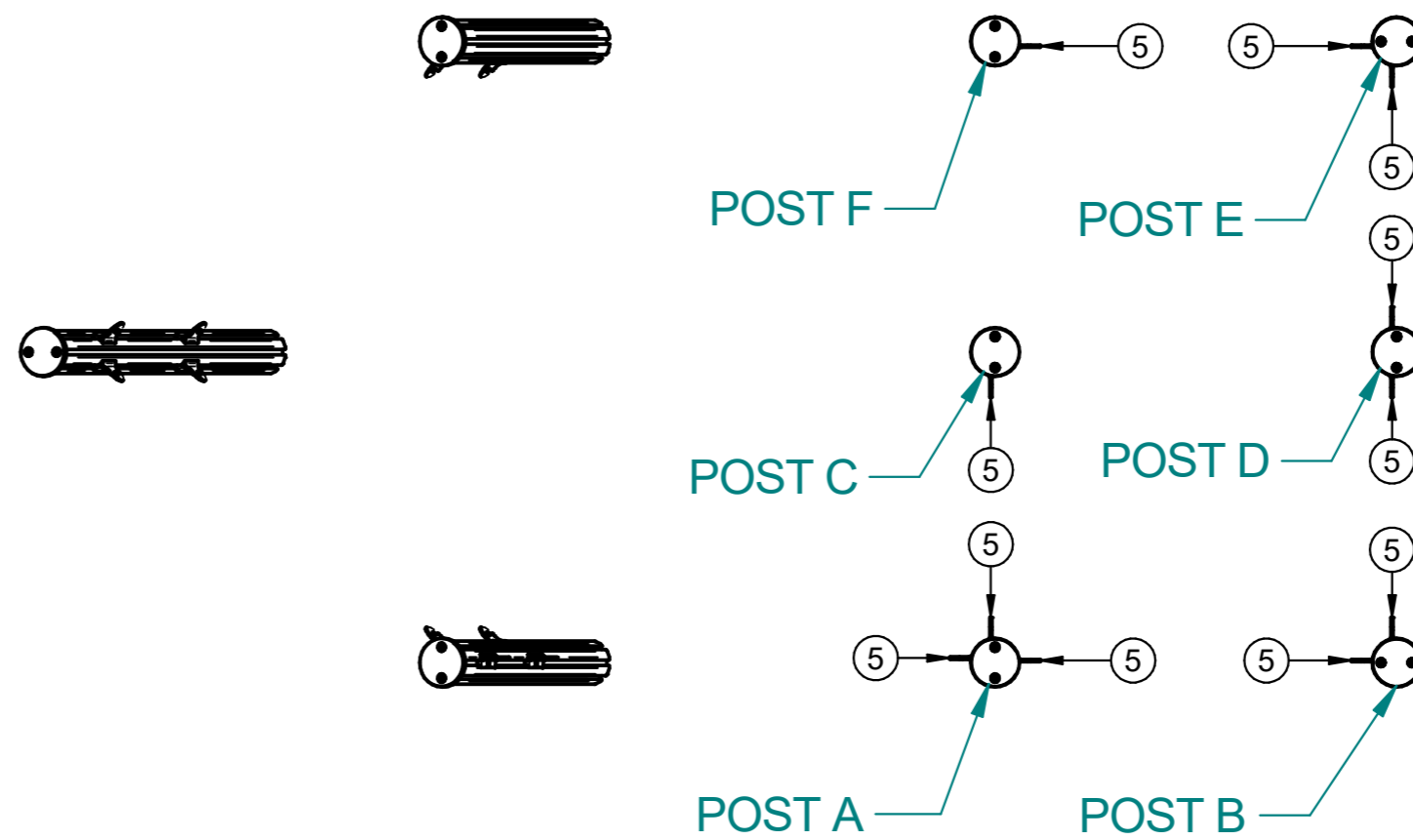
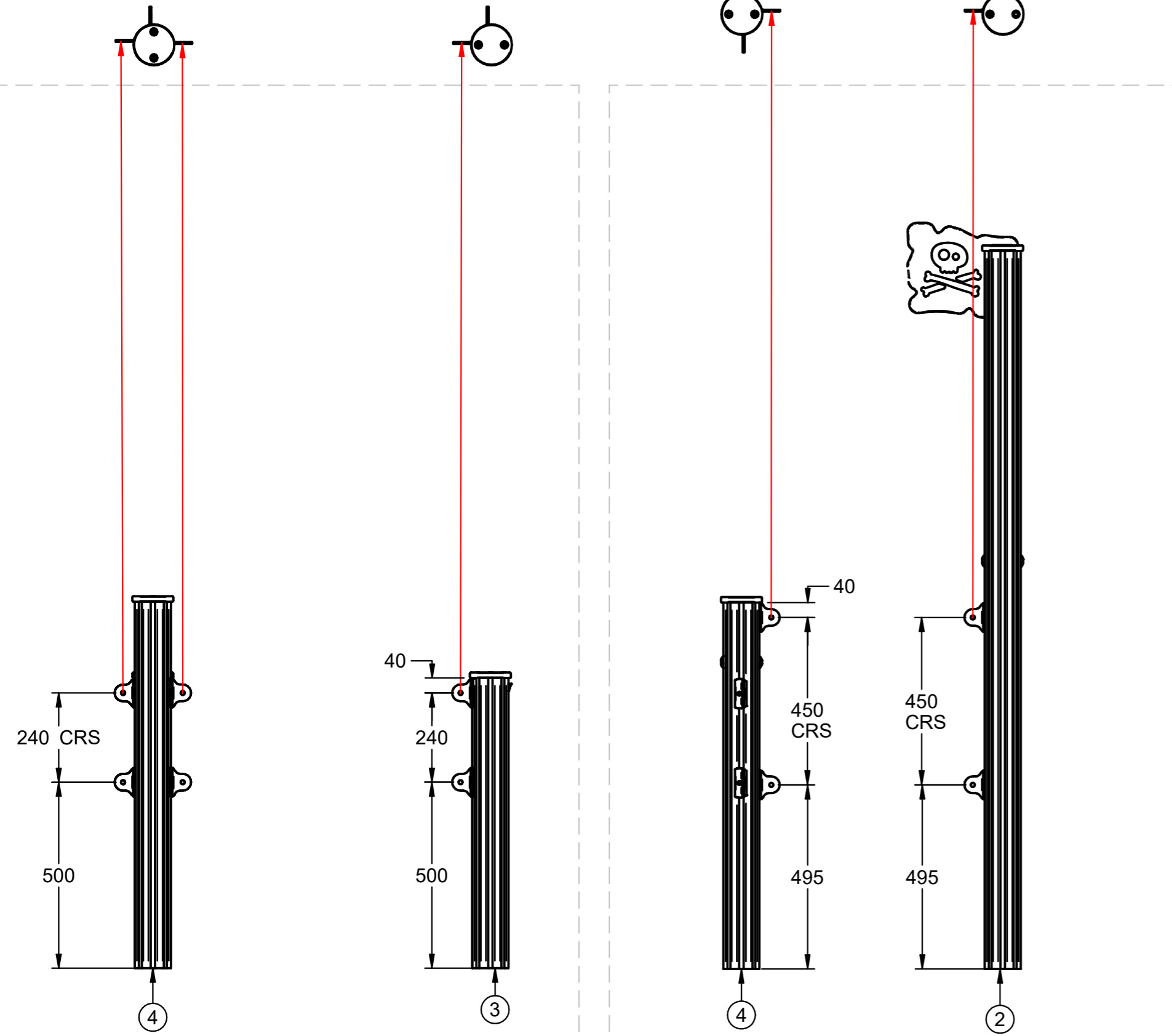
3.

POST A

POST B

POST A

POST C



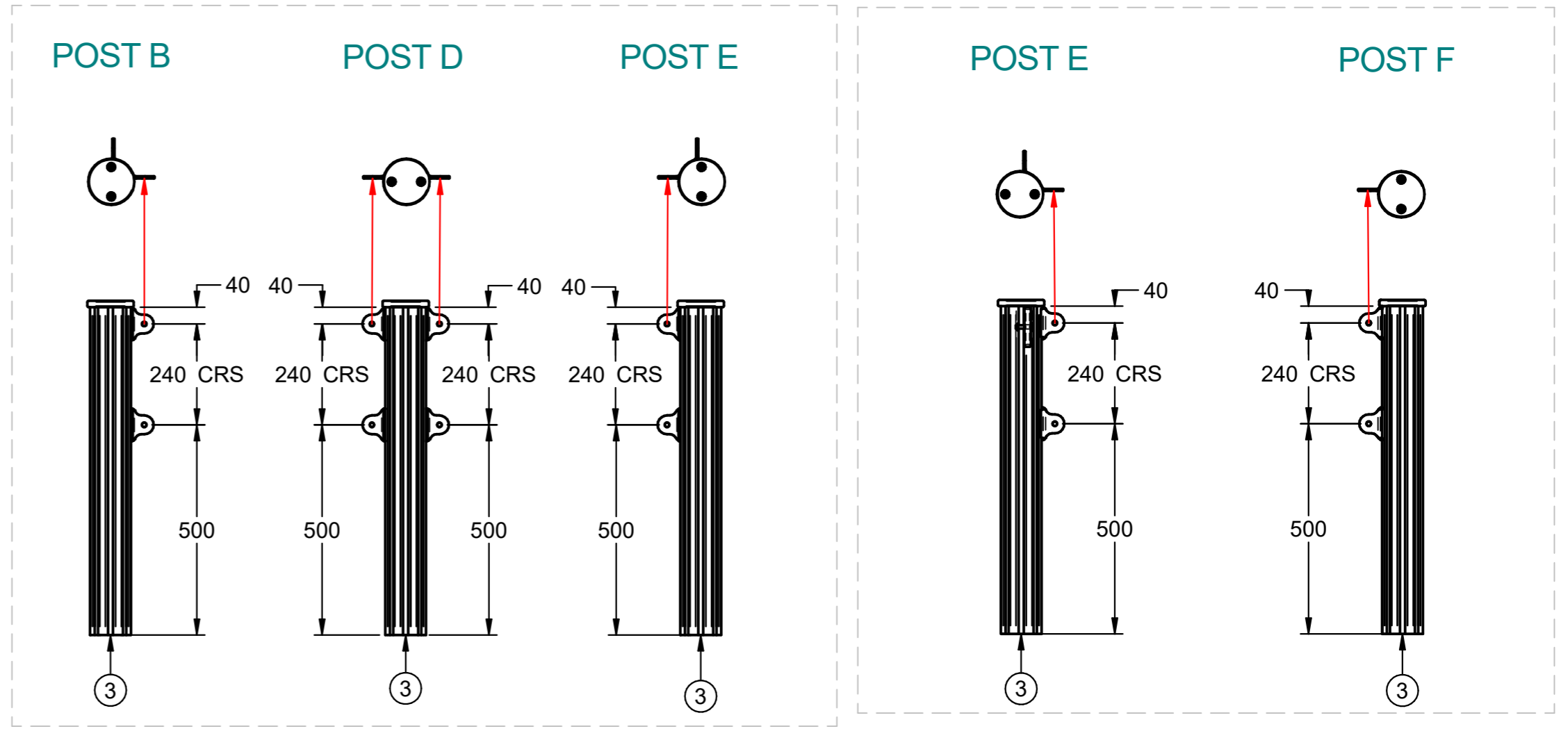
POST B

POST D

POST E

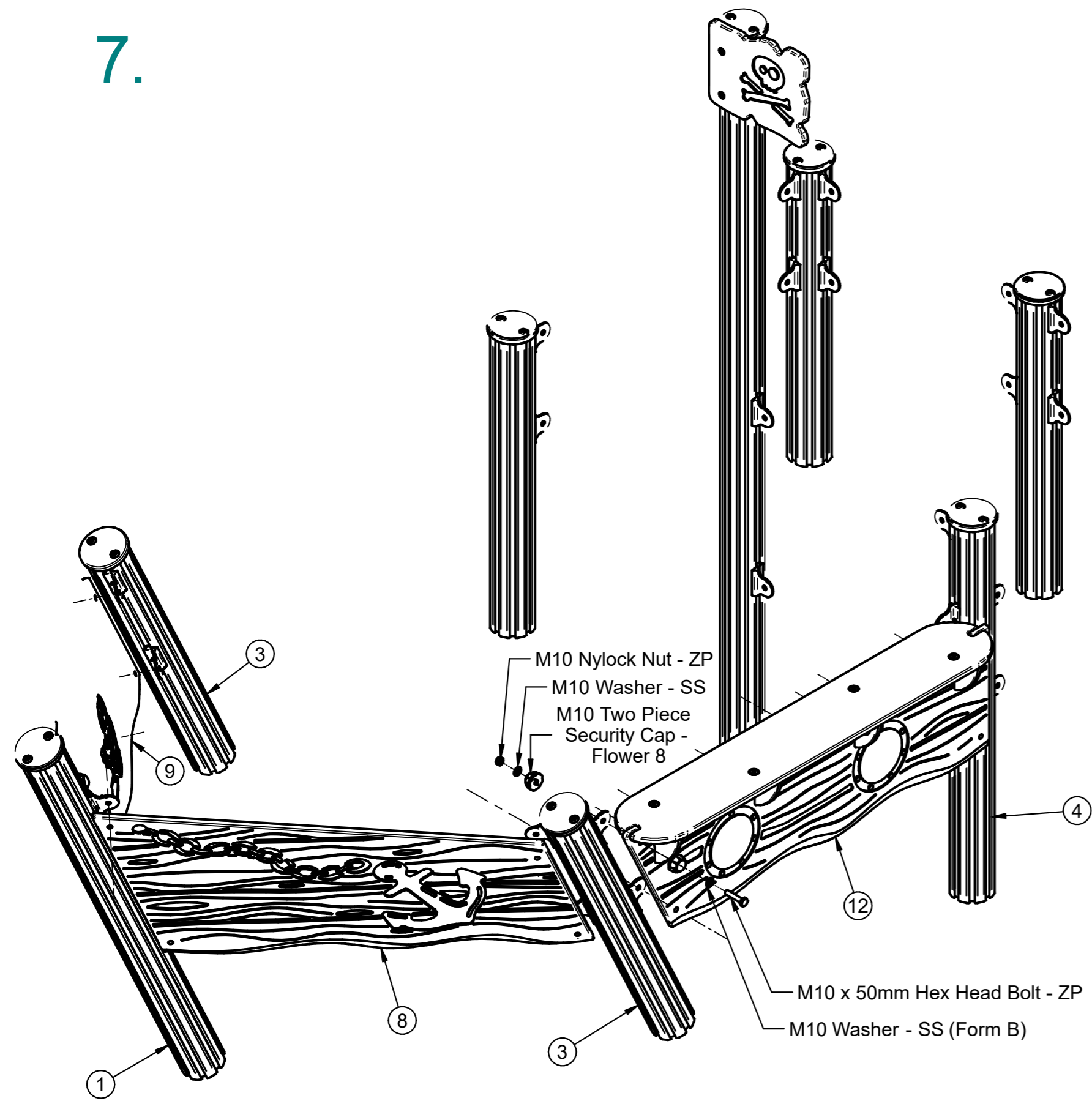
POST E

POST F



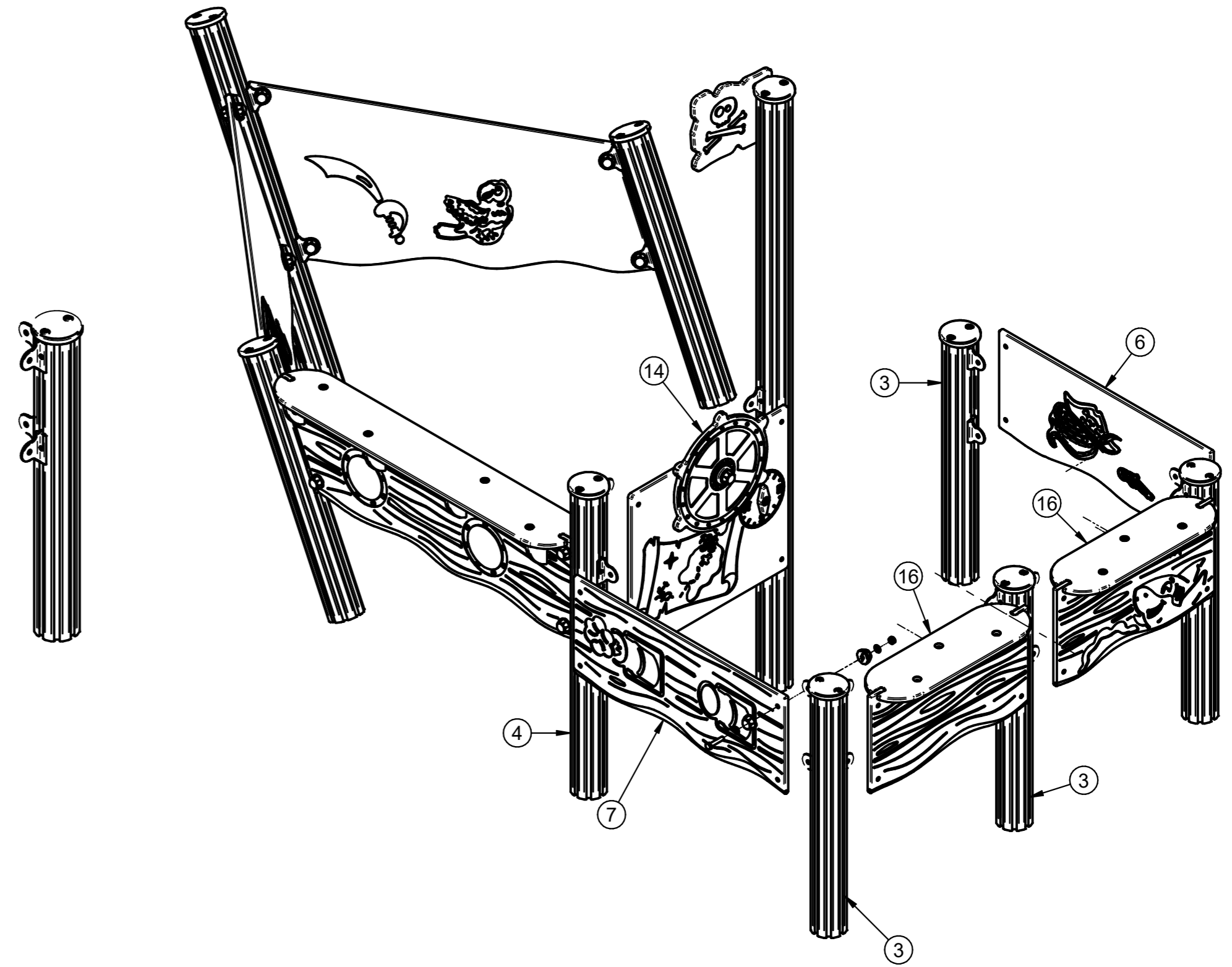
i. Moving onto the back portion of the boat, slide the brackets onto the bottom of the posts and secure in place using the dimensional views shown above and the fixings shown previous

7.



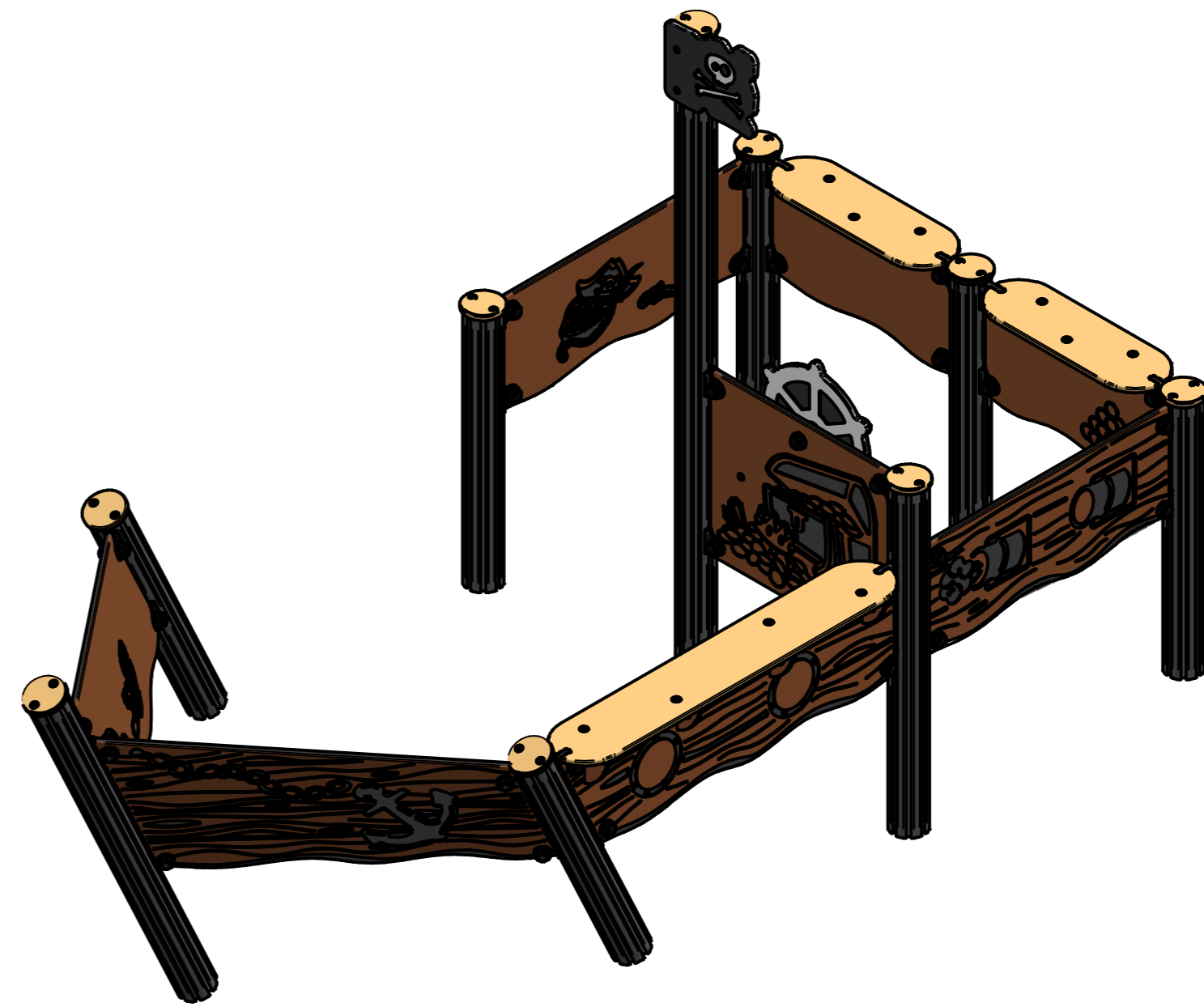
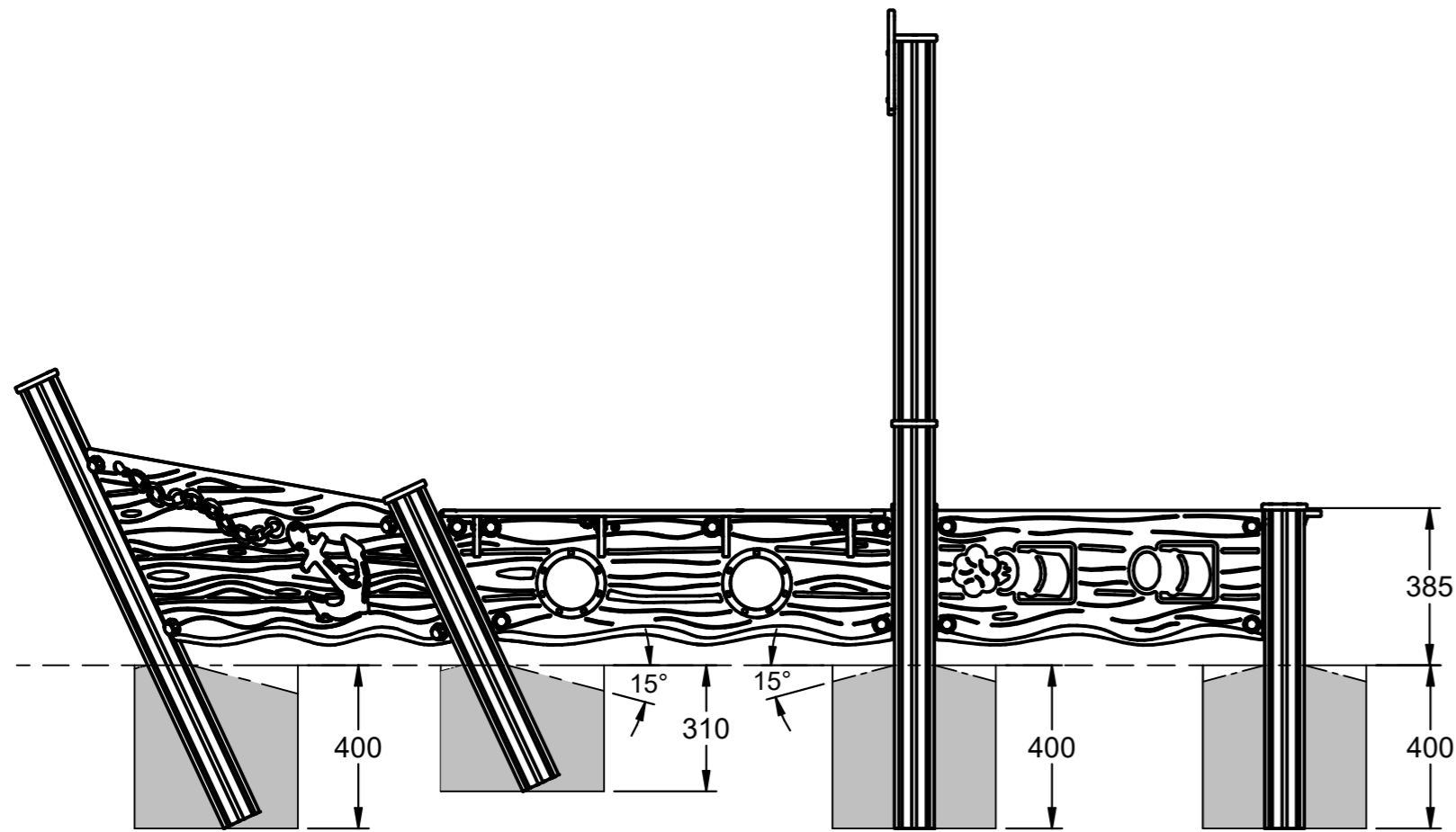
i i. Angle the front posts and secure the bow panels and the long bench panel to the posts as shown.

8.



i i. Secure the stern panels and the pre-assembled bench and steering wheel panel to the post brackets as shown.

12.



i Concrete the Assembled boat into the foundations as per the dimensions above



- Stern Panel: 3.3kg
- Stern Bench Panels: 2.5kg x2 (5 kg total)
- Bow Panels: 5.2kg x2 (10.4kg total)
- Steering Wheel Panel Assembly: 5.8kg
- Small Bench Assembly: 4.3kg x2 (8.6kg total)
- Large Bench Assembly: 8.8kg
- 1685mm Post: 4.9kg
- 1185mm Post: 3.4kg
- 985mm Post: 2.9kg
- 785mm Post: 2.3kg x6 (13.8kg total)
- Post Brackets x32: 2.6kg

Total Unit Weight: Approx 82.6kg

Maintenance Inspection

FREQUENCY	WHAT TO DO
VISUAL INSPECTION (EVERY MONTH)	Identify any risks stemming from vandalism, intensive use or unusual weather
	Check for missing or broken parts
	Make sure that all protective covers are in place Inspect surfacing below and around equipment
FUNCTIONALITY INSPECTION (EVERY MONTH)	Check that the equipment, or the part concerned is operating correctly
	Check all fixings, joints and stability of the equipment and tighten or replace if necessary
	Check all parts for wear and tear and replace if necessary Thorough cleaning of equipment and any stainless steel parts with water and detergent
COMPREHENSIVE INSPECTION (EVERY 6 MONTHS)	All of the above plus:
	Inspect the anchoring system
	Inspect any moving, mechanical and electrical parts are operating correctly Check overall condition of any paintwork or galvanizing – repaint / touch up if necessary